

Personal Photo Browser that can Classify Photos by Participants and Situations

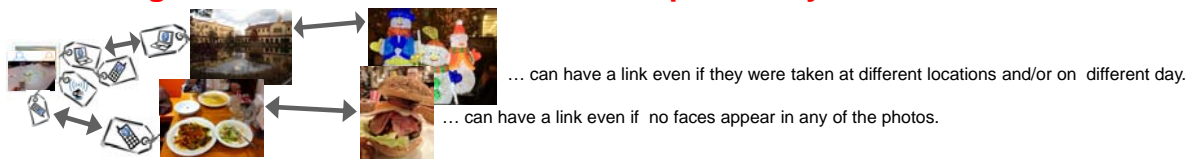
*Tomoya ONISHI *Ryosuke TOKUAMI *Yasuyuki KONO **Satoshi NAKAMURA
 *Kwansei Gakuin University, JAPAN **Kyoto University, JAPAN

Our idea

1. Tags each photo with Bluetooth device-IDs detected around the moment when it was taken.



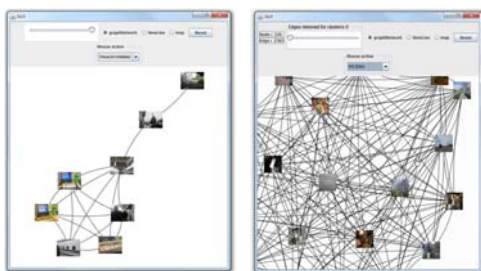
2. Links photos whose tags have intersection and clusters photos by context.



3. The user browses in her photo archive by switching among three view modes and retrieves/finds photo(s) by exploring cluster tree(s) and/or cluster(s) on a map or a timeline.

Three Views

Graph Network View



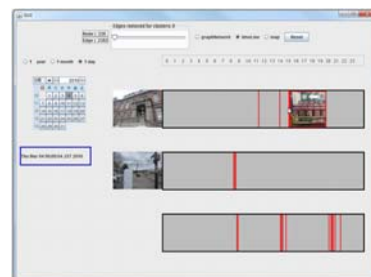
- ◆ Layered cluster tree built by applying multiple "betweenness" threshold of the Girvan-Newman algorithm.
- ◆ Each thumbnail is the representative image of a cluster chosen by applying the PageRank algorithm (left).
- ◆ Jump into a more detailed layer by clicking a thumbnail.
- ◆ Each thumbnail corresponds to a photo at the bottom layer (right).

Map View



- ◆ Layouts the cluster selected in Graph Network View on a map.
- ◆ Each thumbnail/photo is settled on the location where it was taken.

Timeline View



- ◆ Layouts photos of the selected period of time, i.e., year, month, week, or day.
- ◆ Layouts photos in either of the whole archive or the selected cluster in order of their timestamps.
- ◆ Displays a thumbnail by moving the mouse cursor over a red line.

Discussions

Need to incorporate Wi-Fi detection information

Wireless devices and photos pooled by a subject

Year	Bluetooth ID		Wi-Fi ID		# photo
	# unique	# record	# unique	# record	
2009 (Apr.-)	34,604	1,078,067	8,523	838,951	4,563
2010	34,063	1,325,123	33,659	2,878,434	6,125
2011	17,356	1,386,228	39,771	1,587,977	7,743

Increasing: tethering / pocket Wi-Fi?
 Drastically decreasing!: security?